

Economic Conditions in Maine

May 2006

Lynn E. Browne

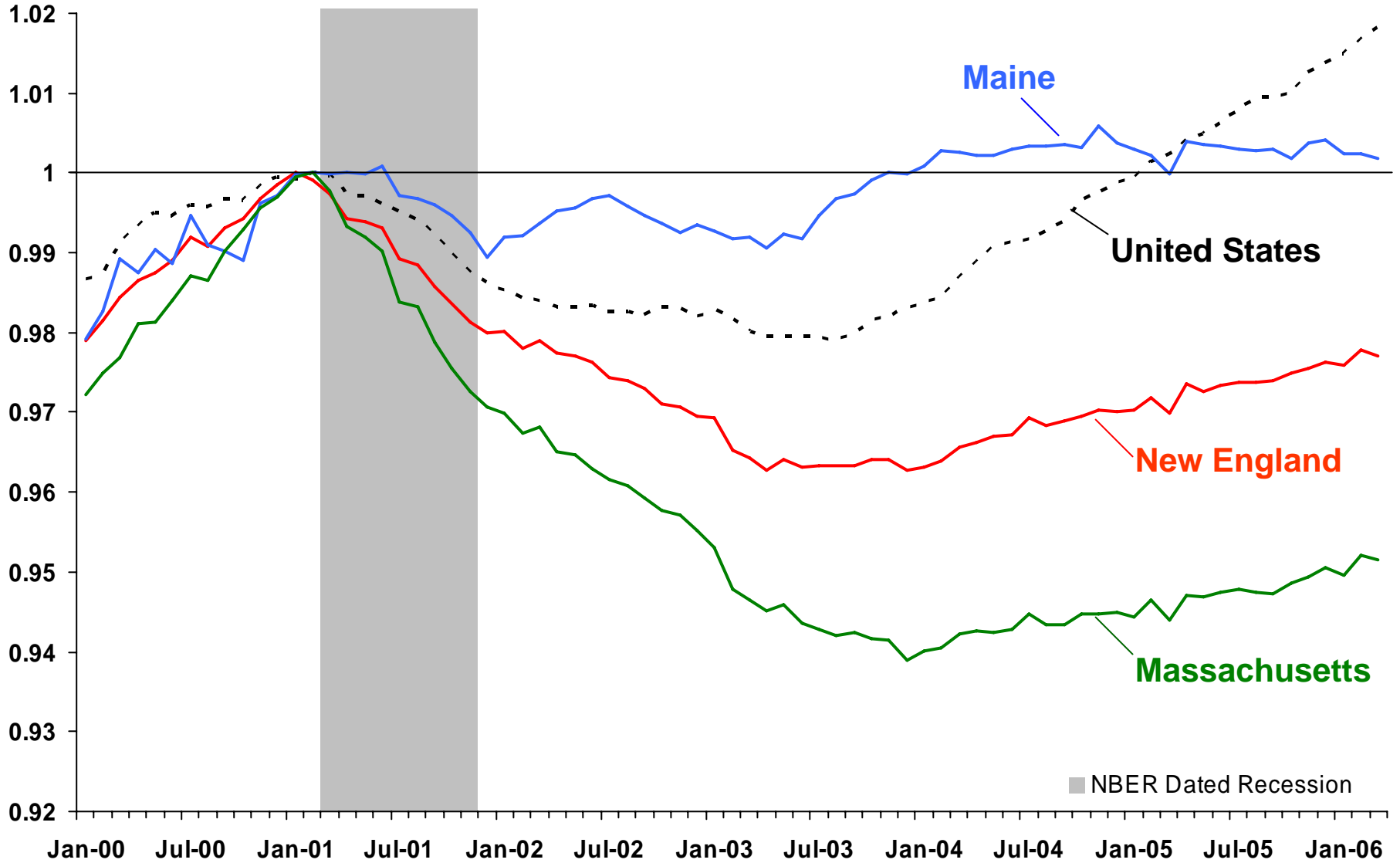
Executive Vice President and Economic Advisor
Federal Reserve Bank of Boston

Charts by Antoniya Owens

Total Nonfarm Employment

Seasonally Adjusted

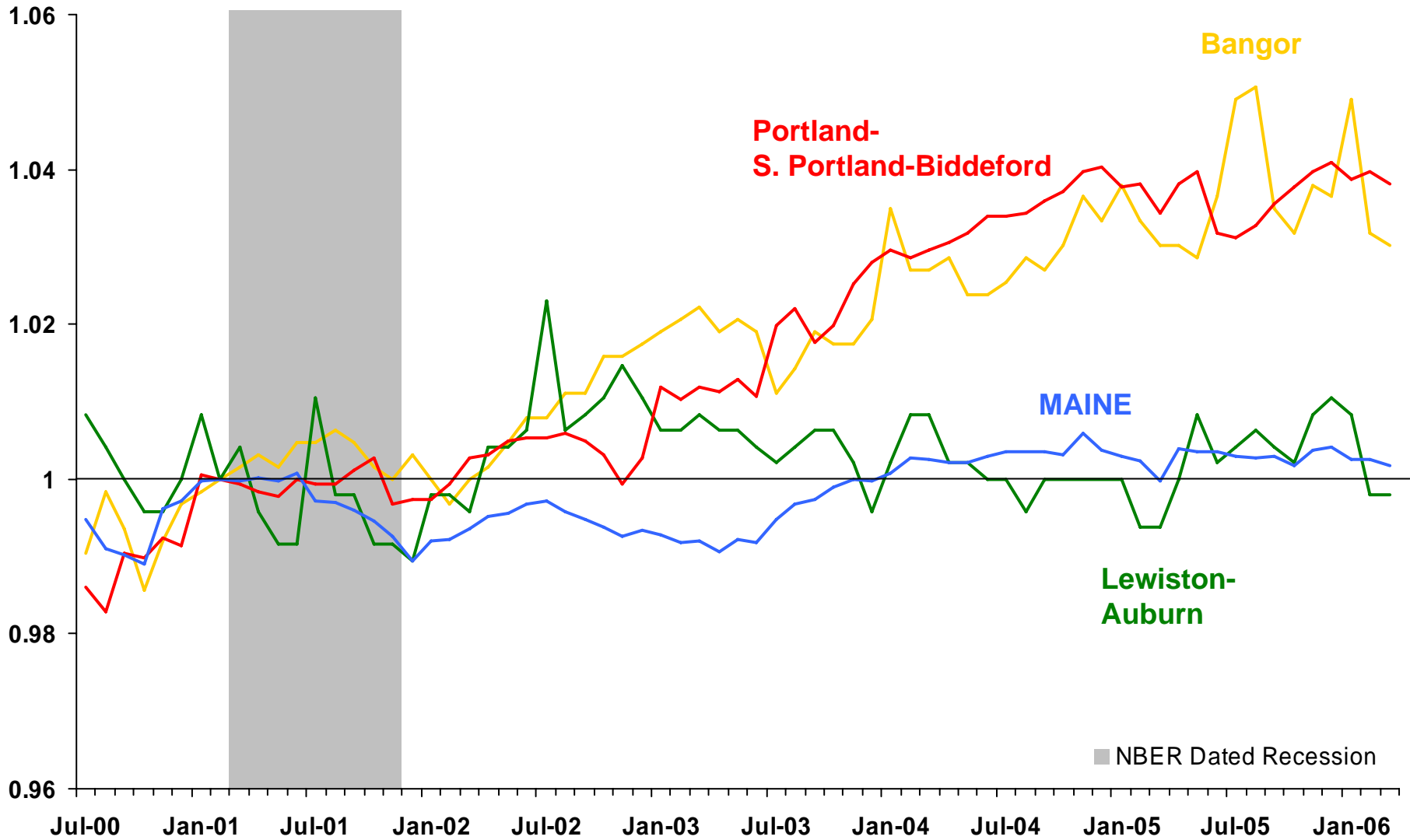
Index,
Pre-Recession Peak = 1



Index,
Feb 2001 = 1

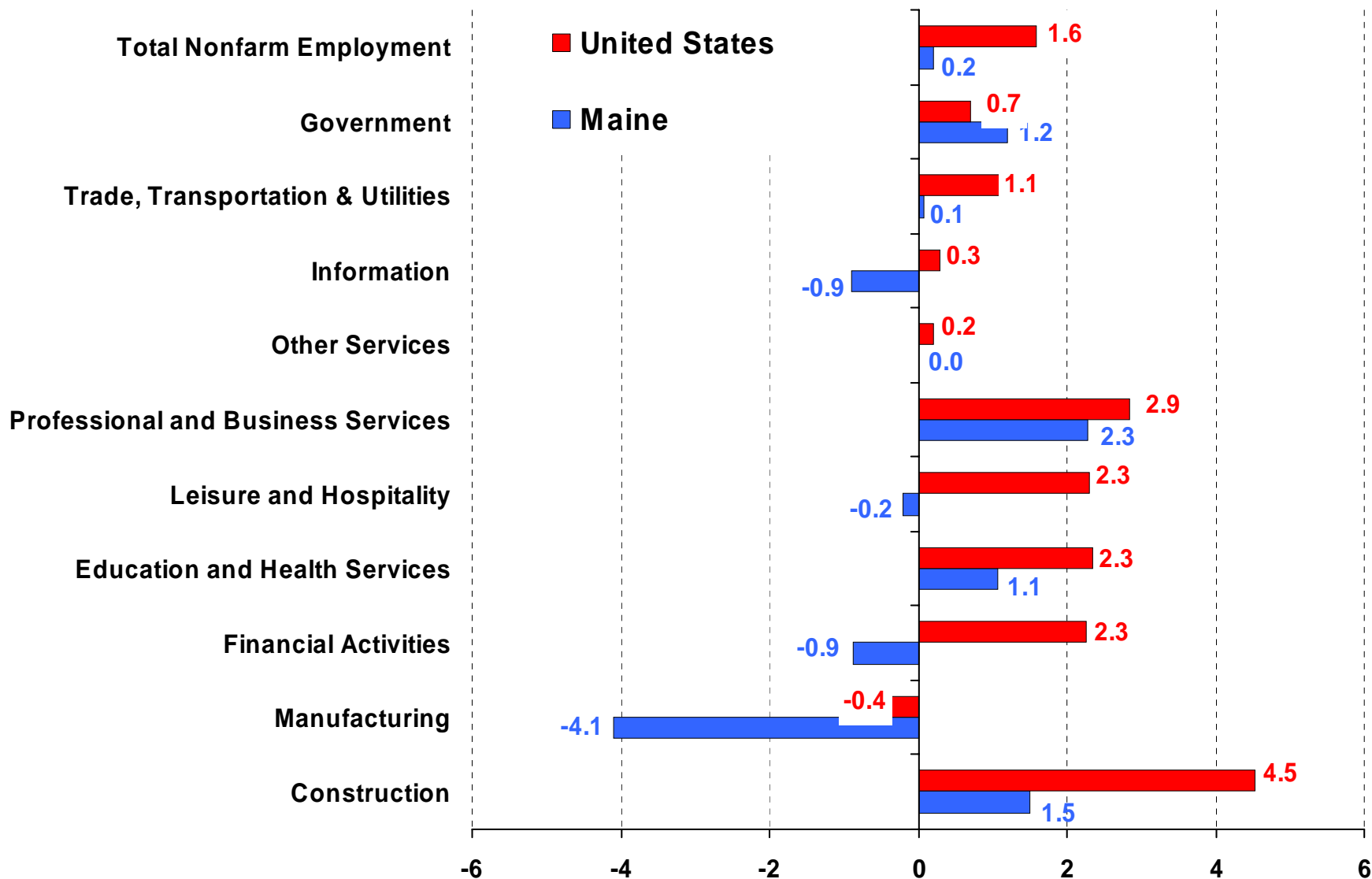
Total Nonfarm Employment

Maine Metropolitan NECTAs
Seasonally Adjusted



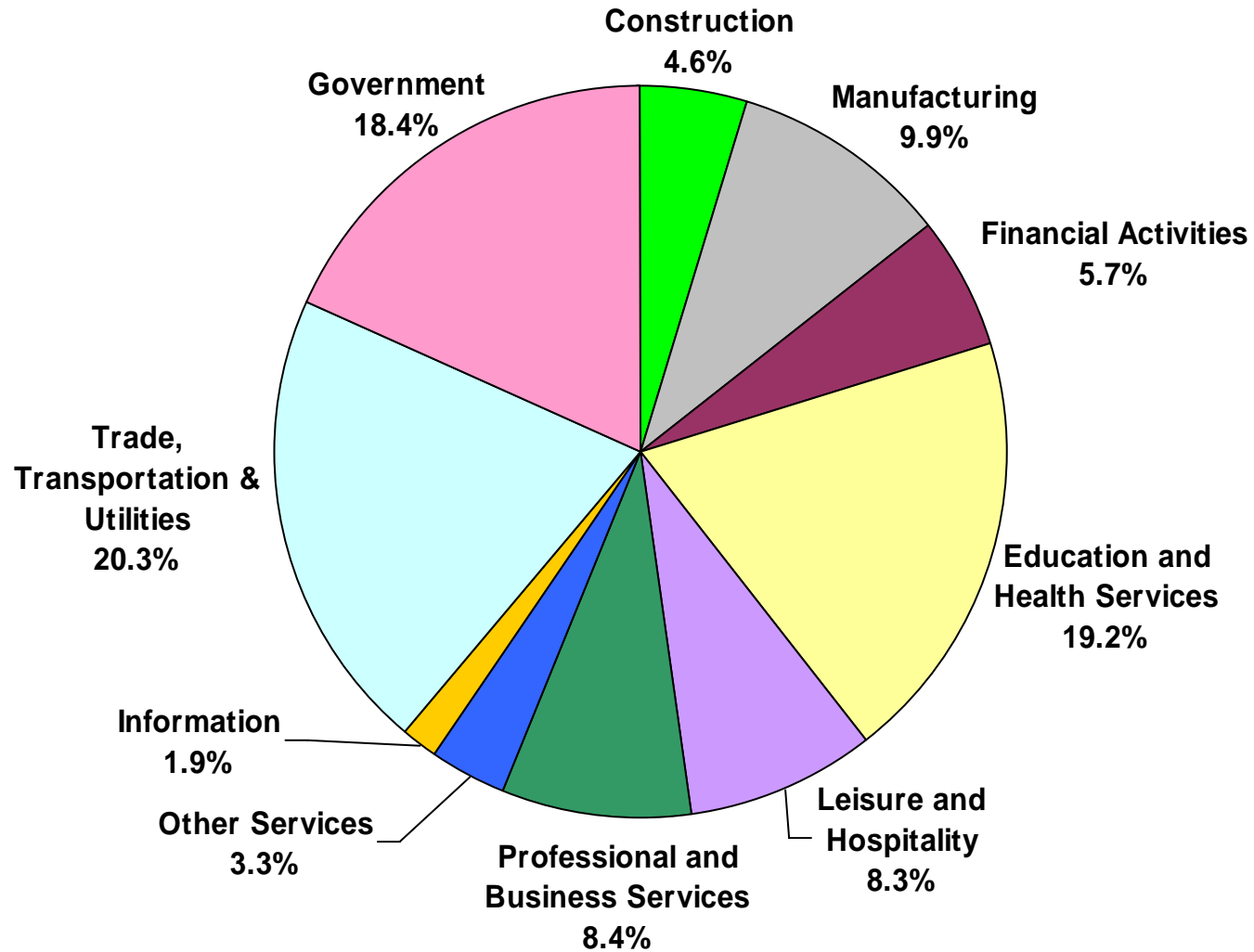
Employment by Industry

Percent Change, March 2005 to March 2006 (NSA)

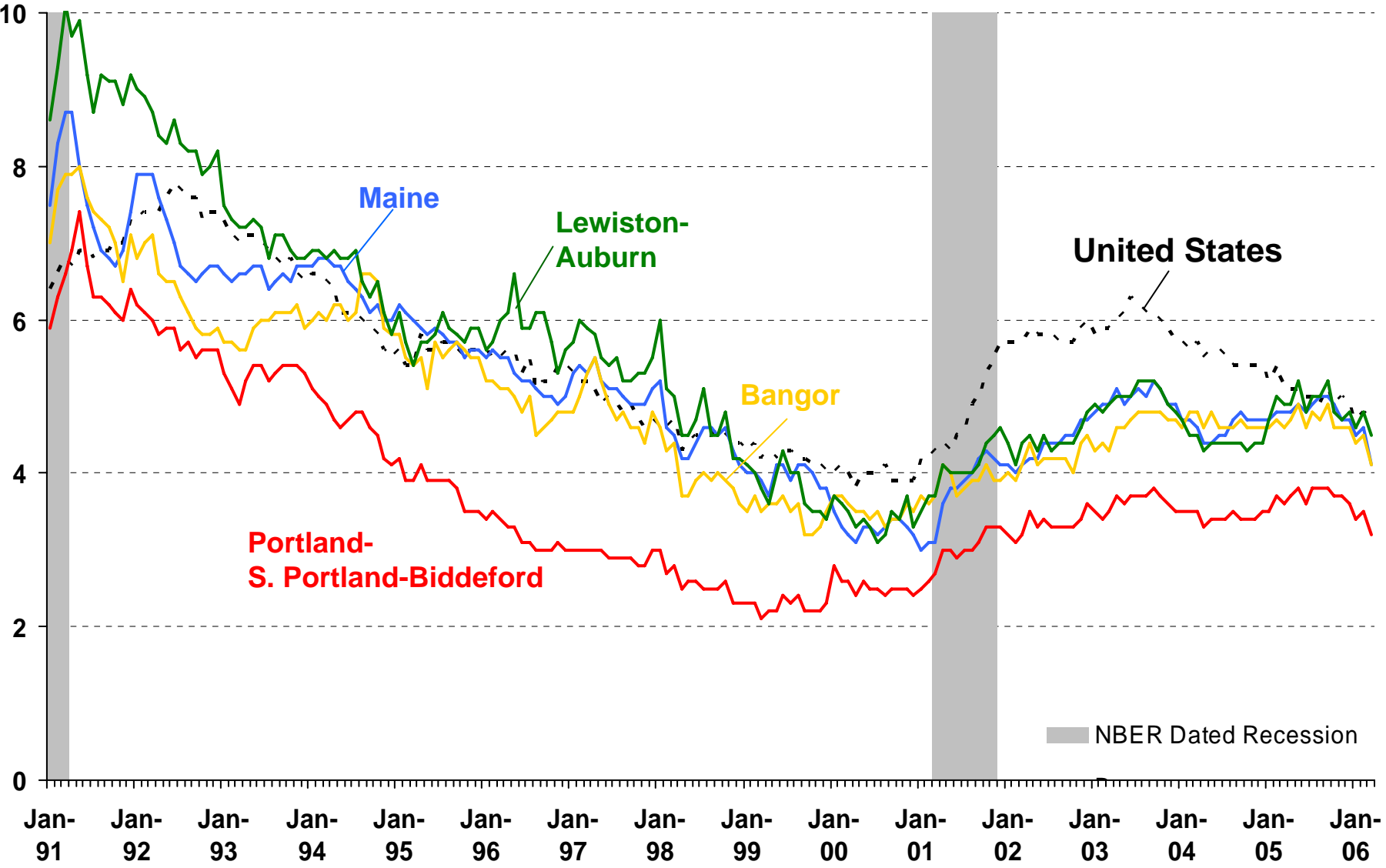


Employment by Industry, Maine

March 2006, Not Seasonally Adjusted



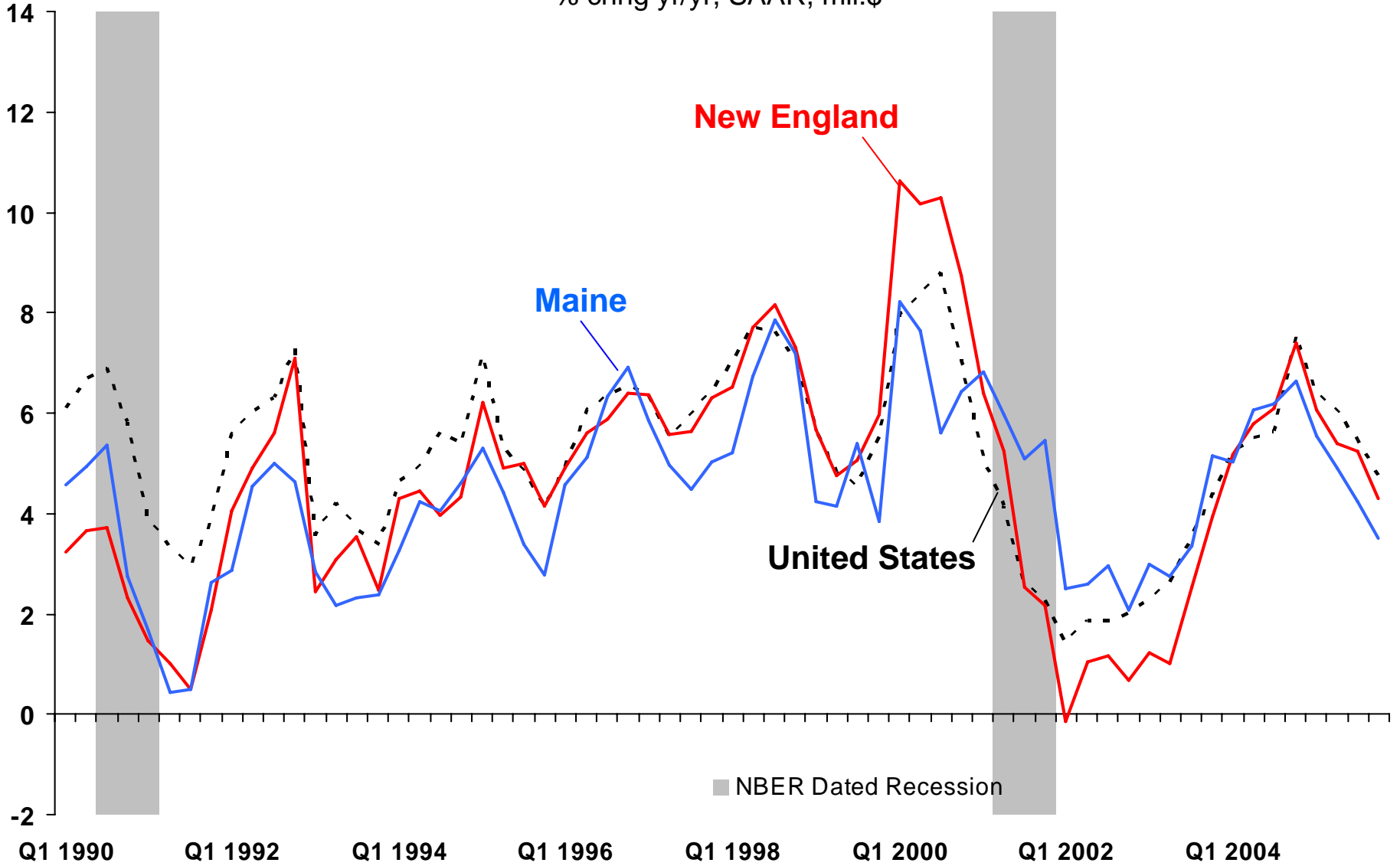
Unemployment Rate



Percent

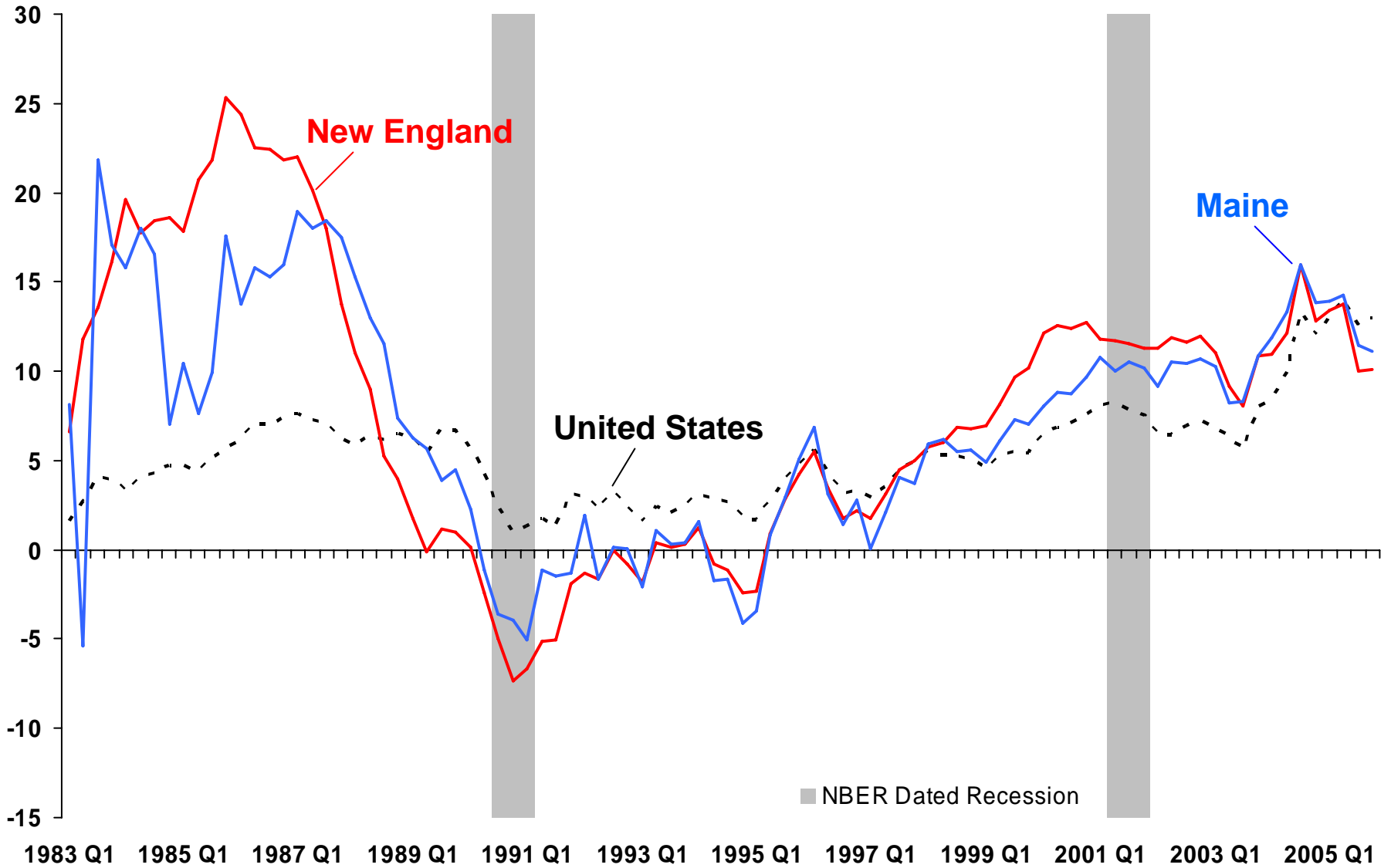
Total Personal Income

% chng yr/yr, SAAR, mil.\$



Percent Change
from Year Earlier

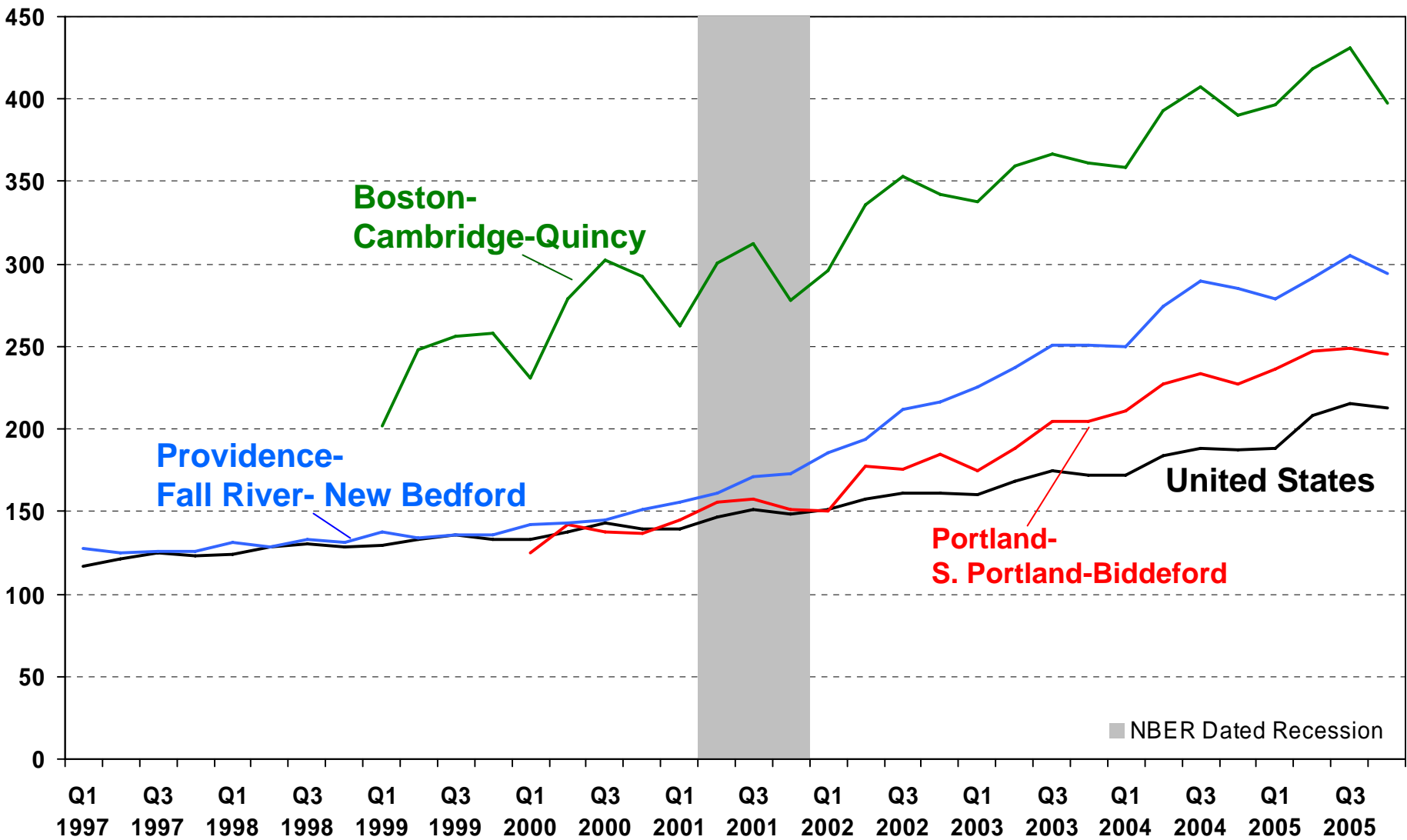
Repeat-Sales Home Price Index



Median Sales Price of Existing Single-Family Homes

Not Seasonally Adjusted

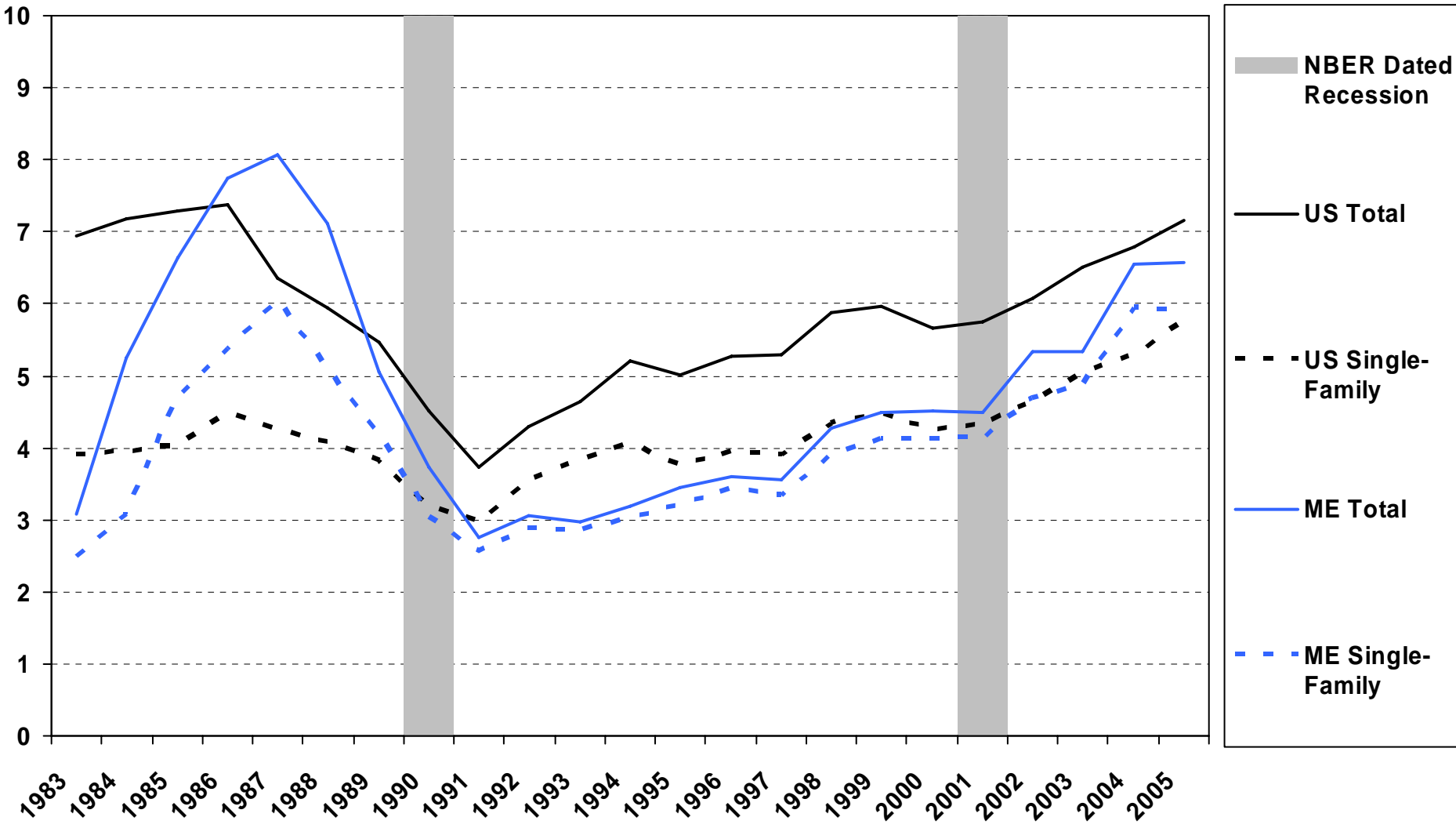
Thousand Dollars



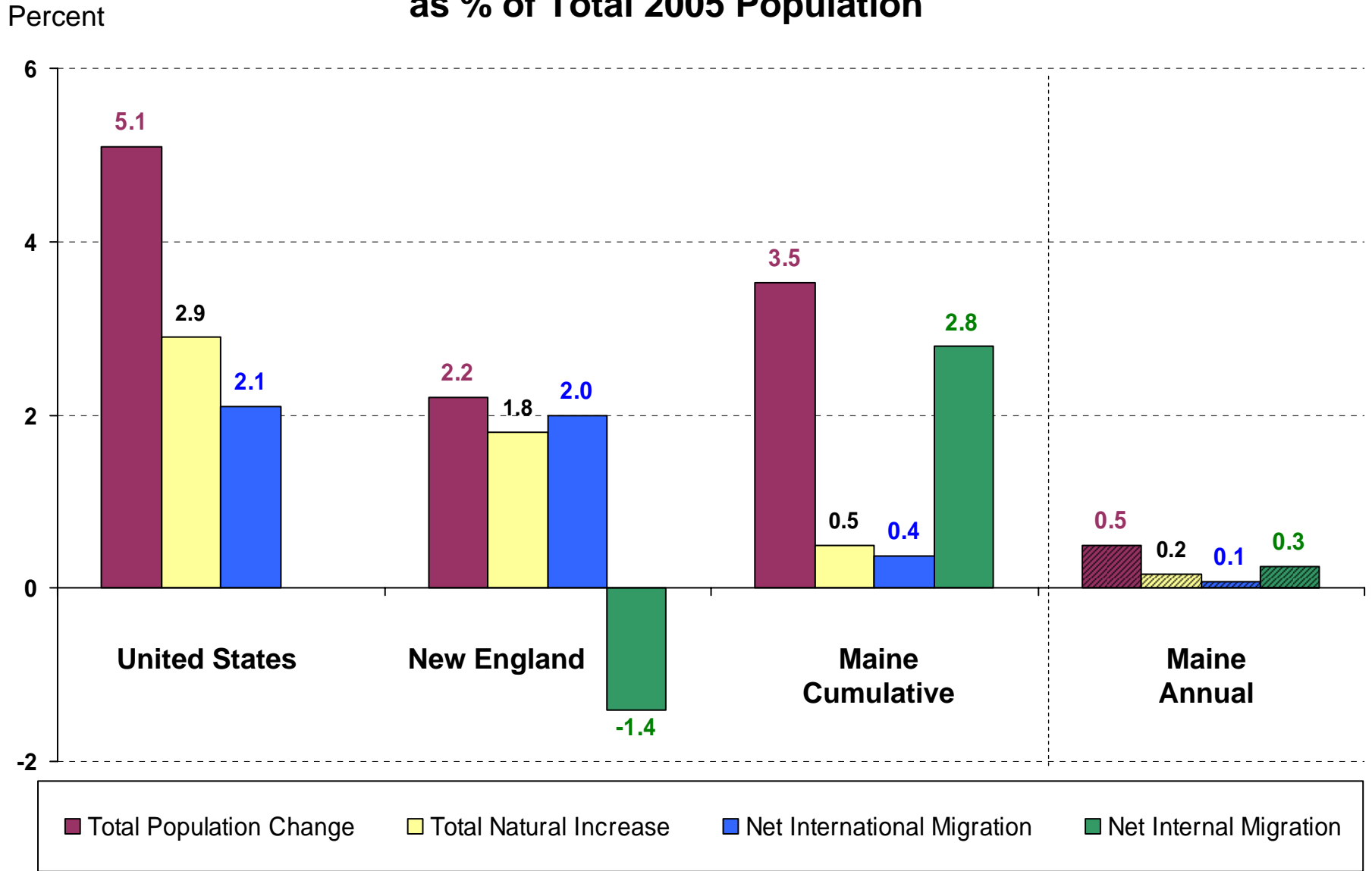
Total Annual Housing and Single-Family Permits Authorized

Seasonally Adjusted

Total Housing Units
per Thousand People



Cumulative Components of Population Change (2000-2005) as % of Total 2005 Population



Selected Population Indicators 2004 American Community Survey

	Maine	U.S.	Rank	High/low
Median age	40.7	36.2	1	40.7/28.0
% households w. person 65+	24.3	22.9	10	29.6/12.9
% households w. person 18-	31.4	35.2	46	45.3/23.3

Index U.S. = 1

Per Capita Personal Income Relative to US

